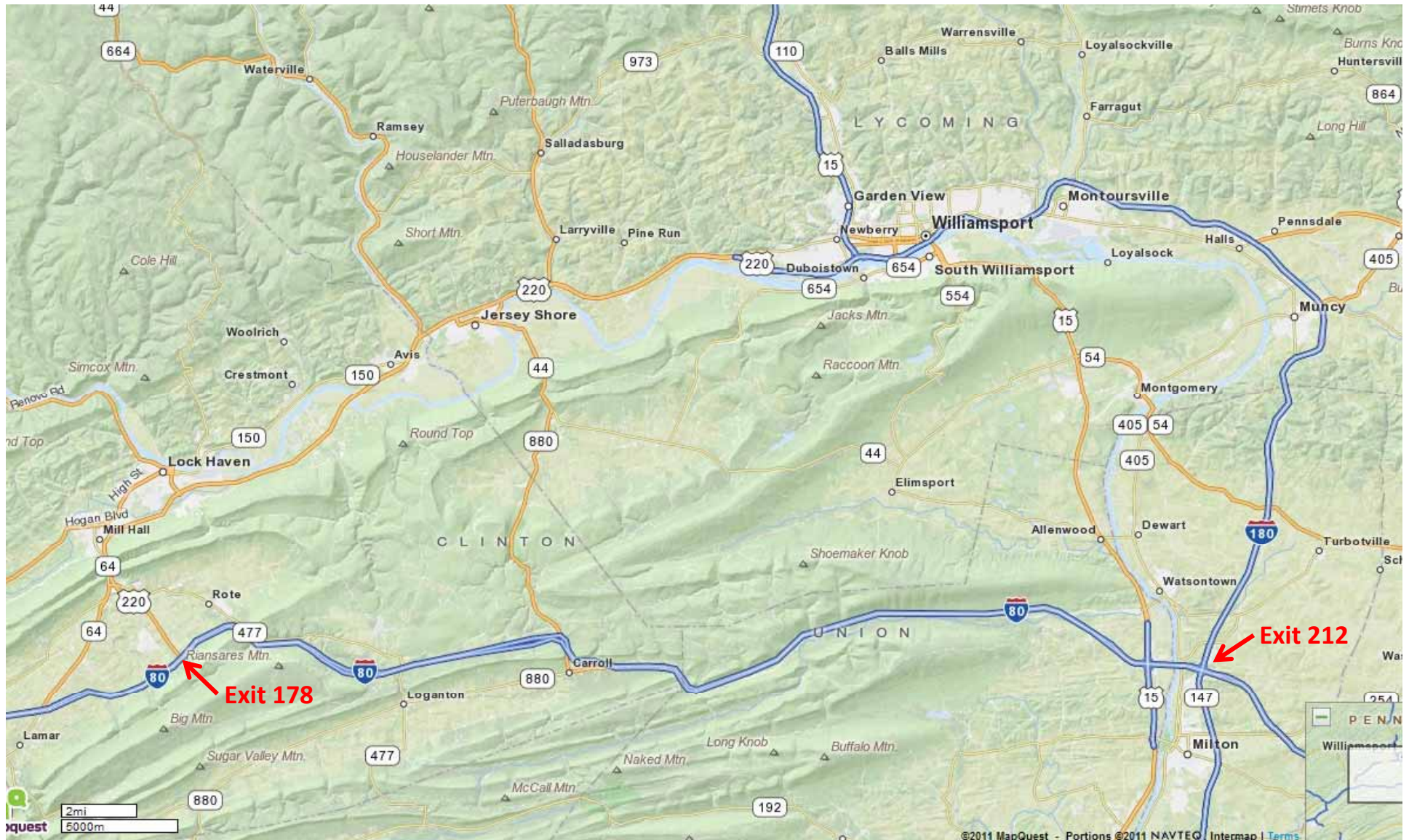


Take Pa turnpike North East Extension I476 to exit-95 for I80 (there is a Super Wawa here, gas up now).

Take I80 west to exit 212 for I180N towards Williamsport.

OR Continue on I80 west to exit 178 for Rt220N towards Lock Haven (see page 5).

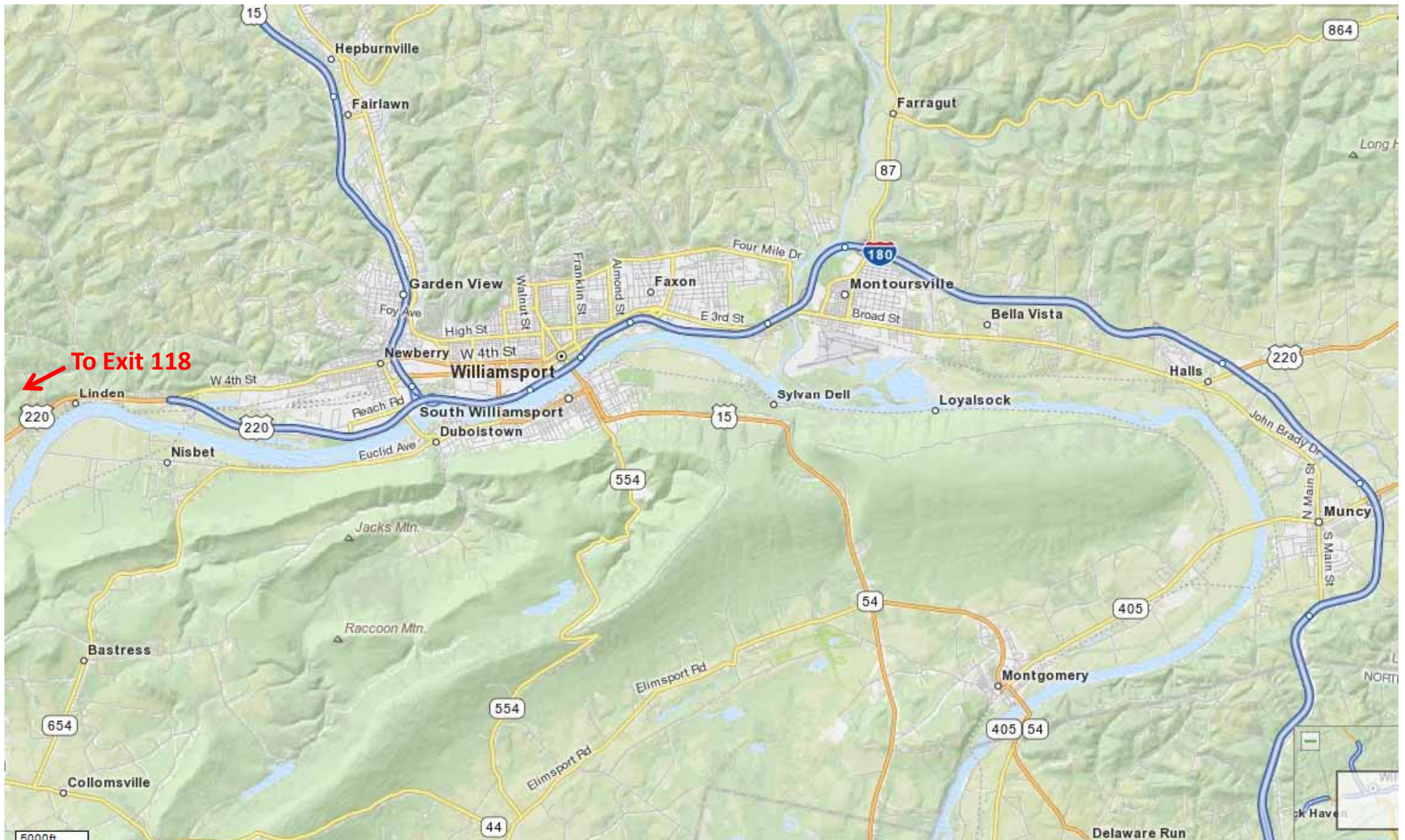
The distance in miles, taking either route between Exit 212 and Cherry Springs SP, is almost the same you decide.



Take I180N towards Williamsport (The Williamsport area is a good place to stop for supplies, food, lunch or whatever you may need).

I180 combines with Rt220 before Williamsport, I180 stops just past Rt15 in Williamsport and Rt220 continues stay on Rt220!

Take Rt220 to exit 118 for Rt150.

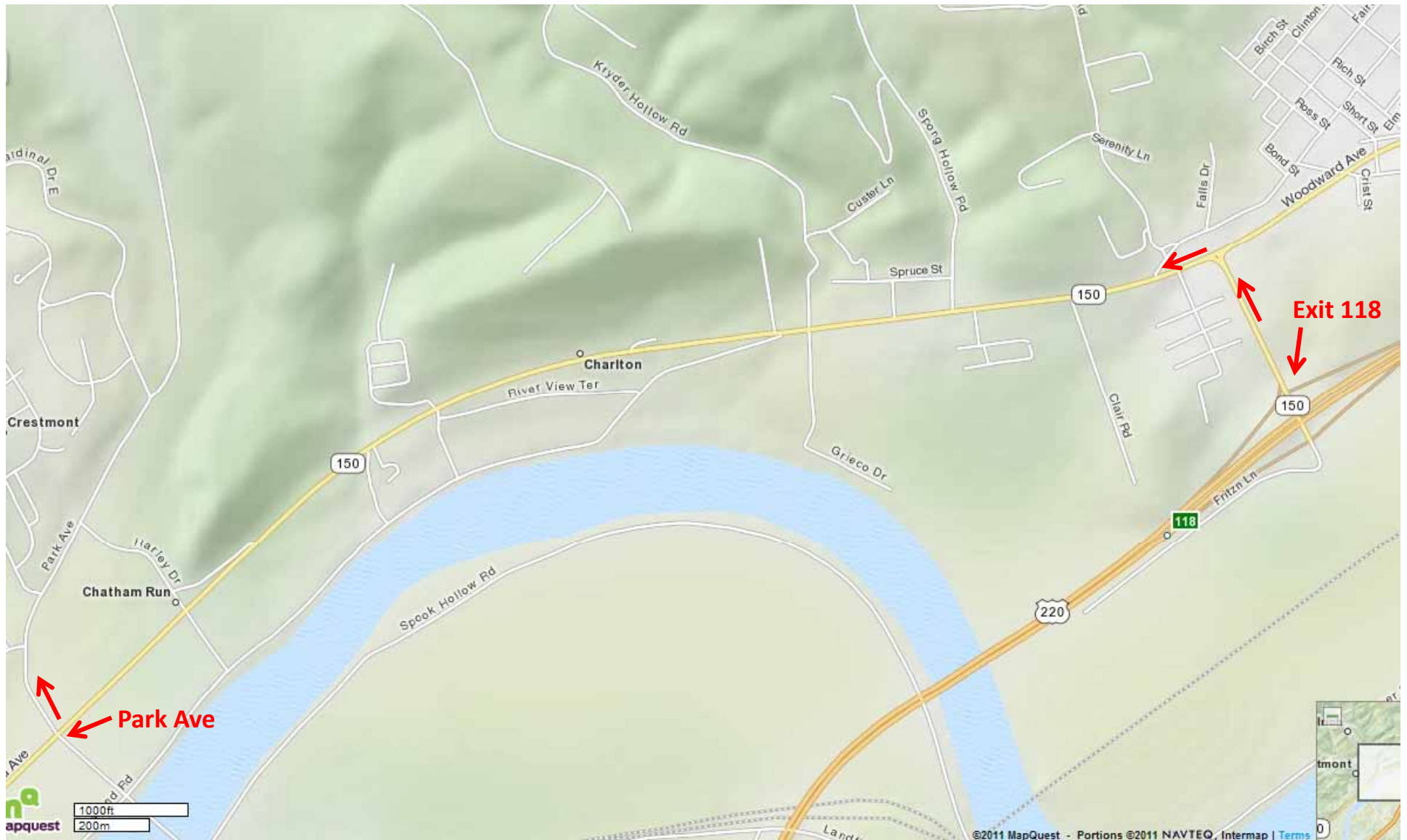


Take Rt220 to exit 118 for Rt150, after short ride you “T” into Rt150 turn left.

Follow Rt150 about 1mi to Park Ave (Detour Rt44 sign) Turn right.

Follow Park Ave about 1/4mi to Little Plum Run Rd turn left.

(This route may seem to be small back roads, and they are, but very good back roads.)



Follow Park Ave about 1/4mi to Little Plum Run Rd turn left.

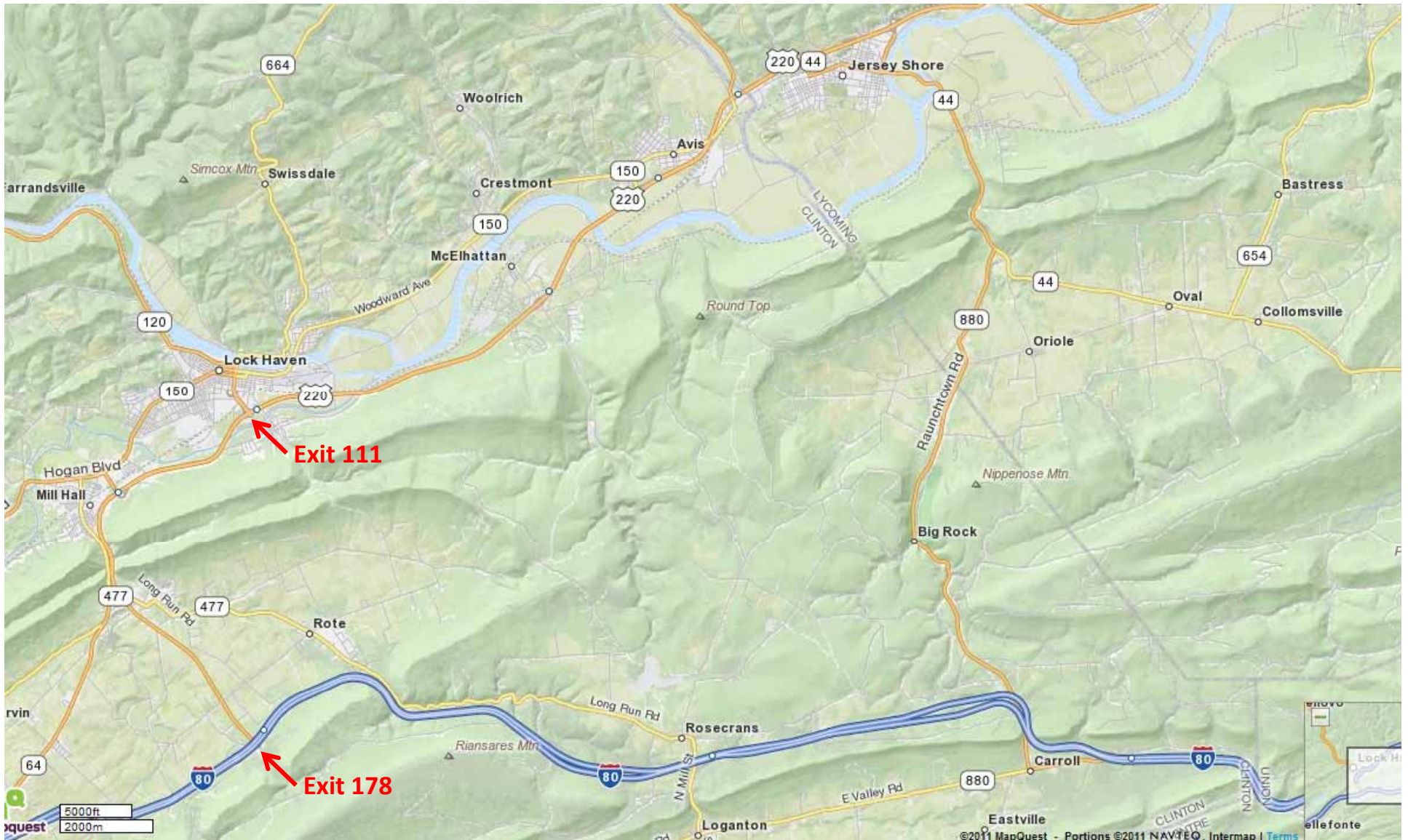
Follow Little Plum Run Rd to Rt664 turn right .

Follow Rt664N to Rt44 Haneyville, you have Stop. Continue north on Rt44.



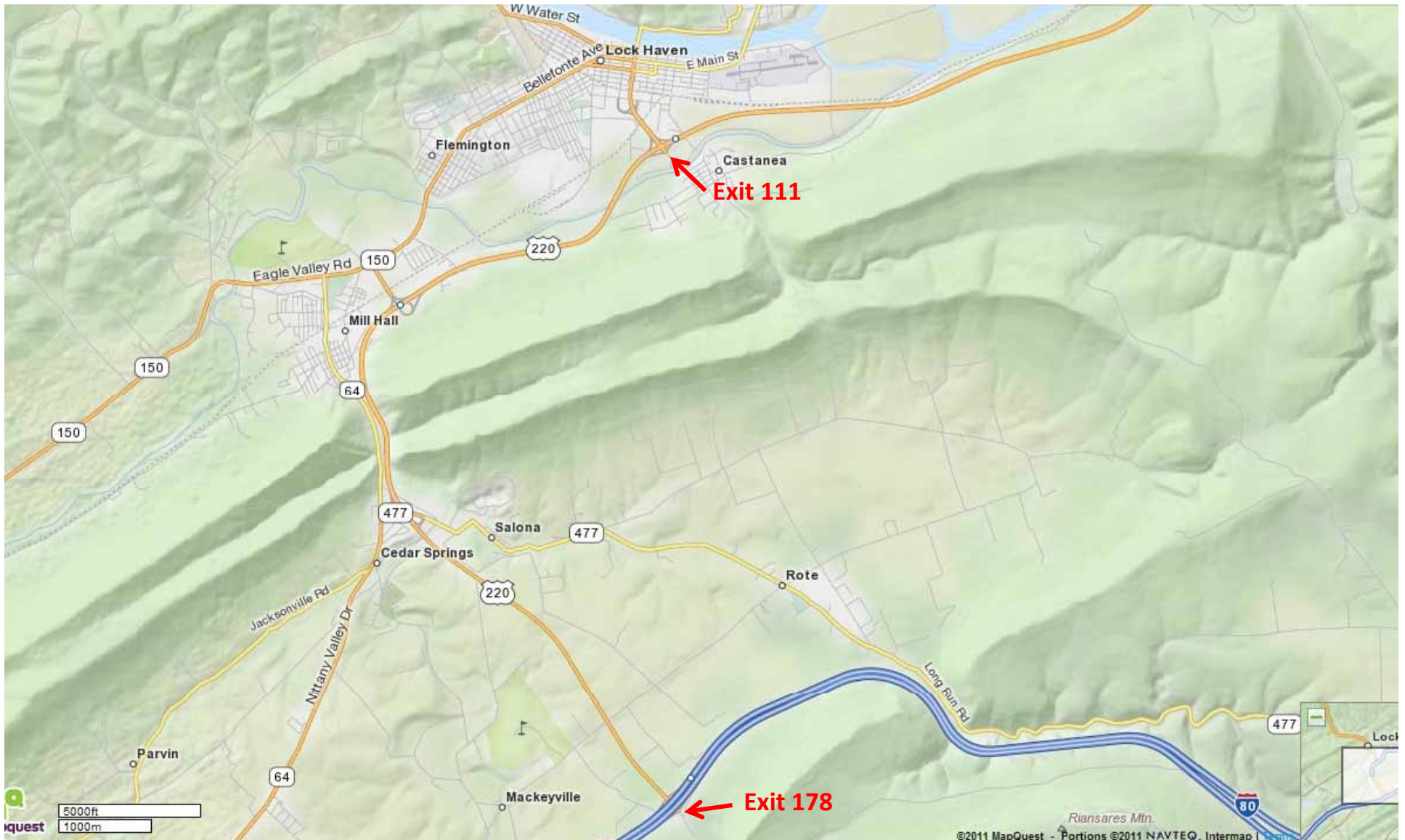
Take I80 west to exit 178 for Rt220N towards Lock Haven

Take Rt220N to exit 111 for Rt120N going thru Lock Haven



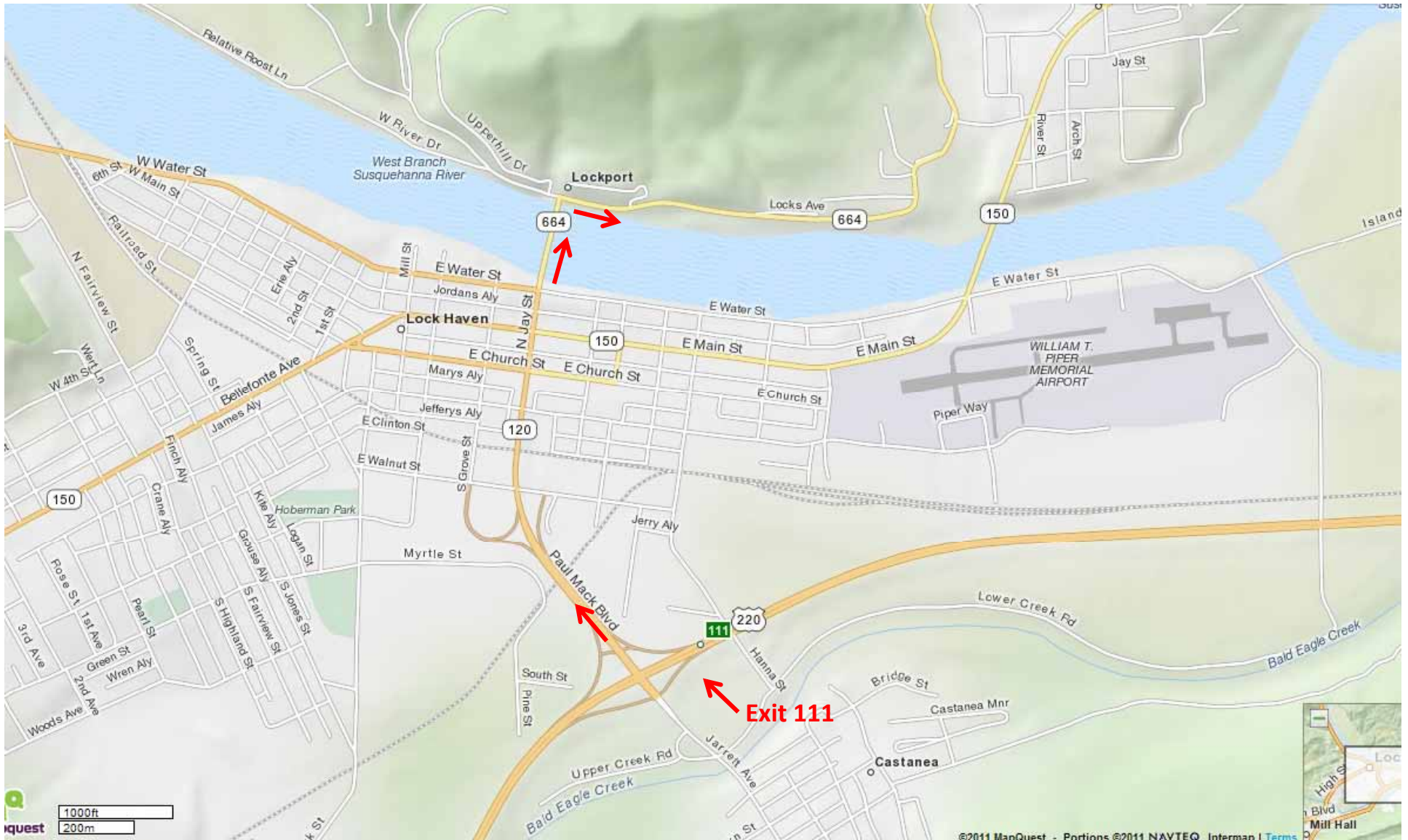
Take Rt220N to exit 111 for Rt120N

Take Rt120N thru town of Lock Haven (short drive) Rt120 turns left at river, Rt664 crosses river.



Take Rt120N thru town of Lock Haven (short drive) Rt120 turns left at river, Rt664 crosses river.

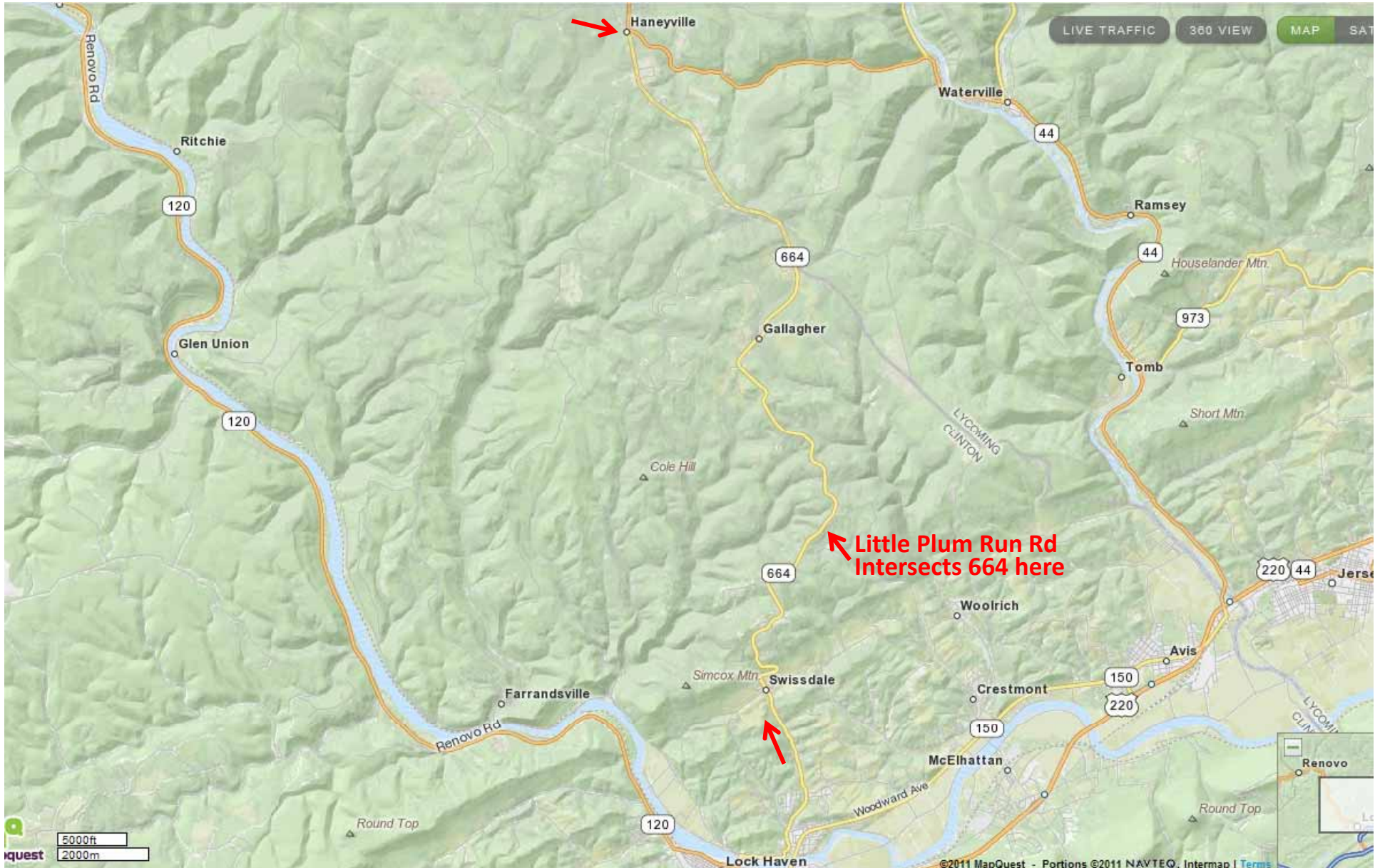
Take Rt664 across bridge and turn right follow Rt664N to Rt44N (be very careful of heavy trucks, this is a truck Route).



Follow Rt664 until it intersects with Rt44 at Haneyville from right, You have Stop sign.

(be very careful of heavy trucks, this is a truck Route).

Continue north on Rt44.

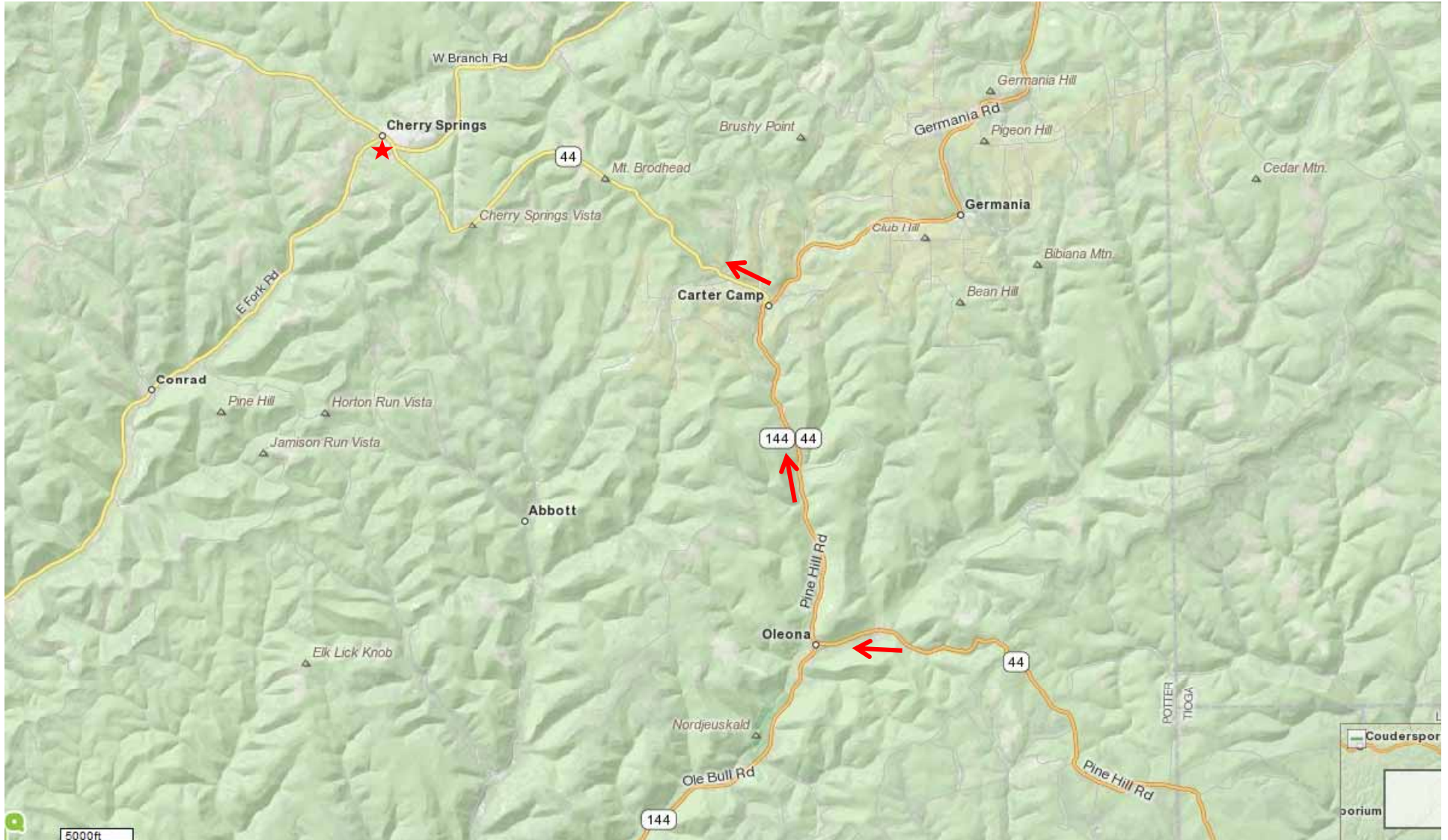


Follow Rt44N and enjoy the ride, its beautiful!

At Oleona, Rt144 intersects/combines with Rt44. At Carter Camp Rt144 splits off. YOU DON'T

Stay on Rt44 you are almost there. You will pass two vistas, stop and enjoy the view.

Shortly after the second vista you will arrive at Cherry Springs State Park.



Just a reminder, most of the roads once you are off the main roads are winding hilly "Real Fun to Drive"

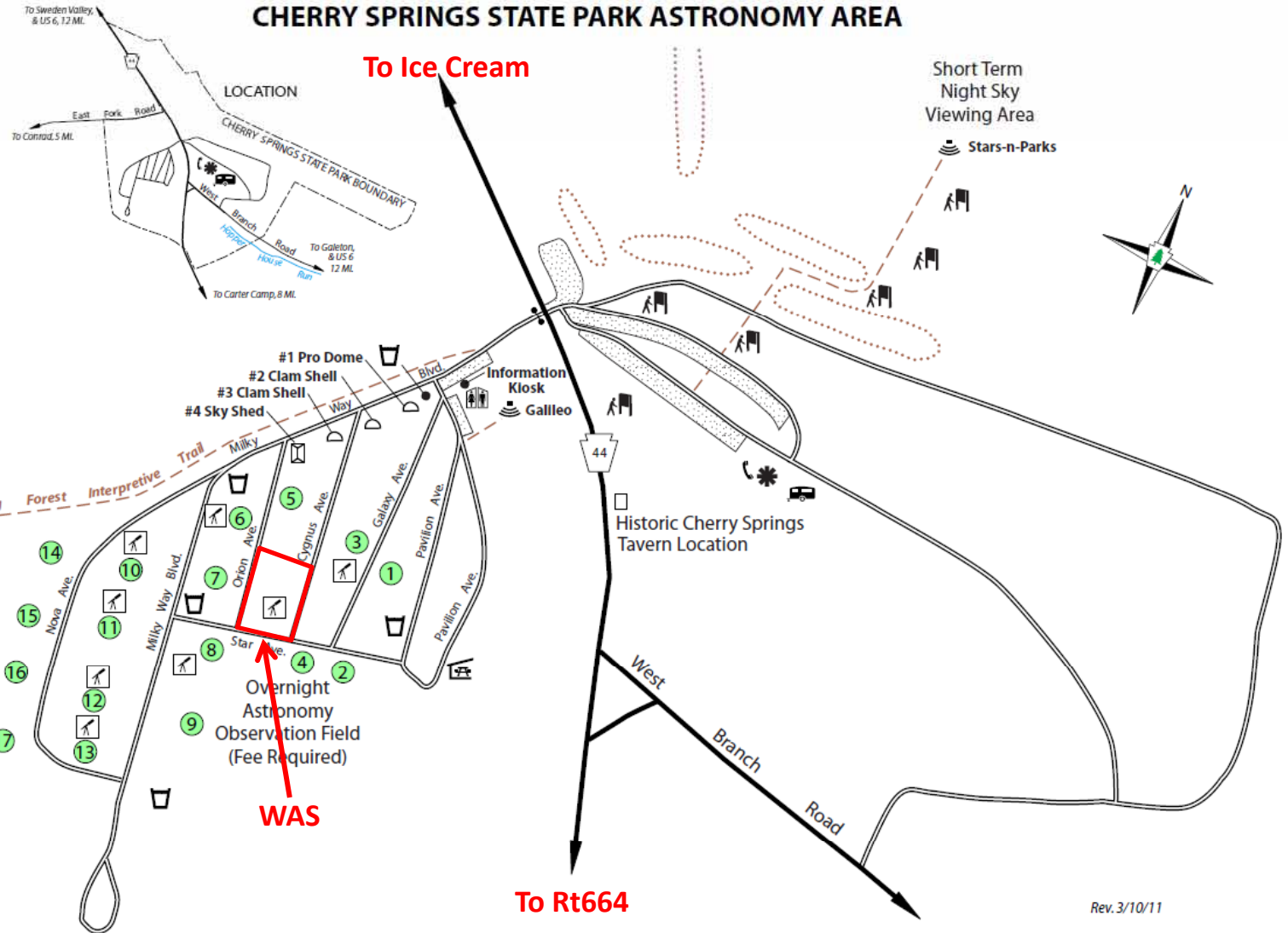
CHERRY SPRINGS STATE PARK

c/o Lyman Run State Park
454 Lyman Run Road
Galeton, PA 16922
Phone: 814-435-5010
e-mail: lymanrunsp@state.pa.us

Astronomy Observation Field is open year-round, although access is not guaranteed in winter.

Make online reservations at www.visitPAparks.com or call toll-free 888-PA-PARKS

CHERRY SPRINGS STATE PARK ASTRONOMY AREA



LEGEND

- Contact Station
- Campground
- Public Phone
- Telescope Pad
- Electric Pedestal
- Modern Restroom
- Vault Restroom
- Water
- Amphitheater
- Wayside Exhibit
- Picnic Pavilion
- Gate
- Unpaved Road
- Unpaved Parking Lot
- Light Shielding Berms
- Trail

Rev. 3/10/11

To Lyman Run SP for Showers